

TEACHING WITH TEAMS: USING CHANNELS FOR STUDENT GROUPS

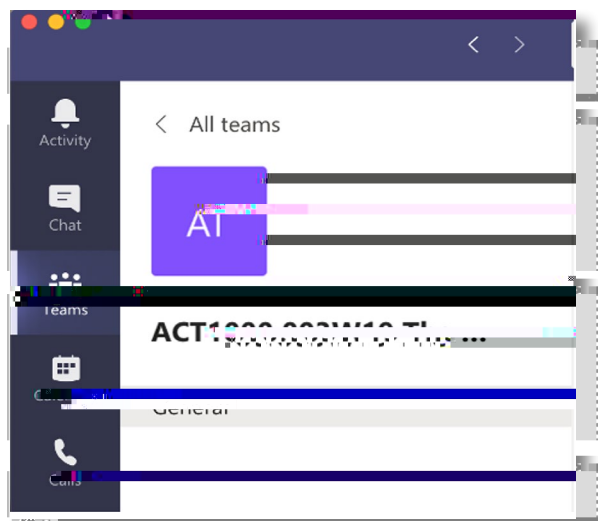
@ # u

▶ What is a Channel?

u

▶ Setting up a Channel

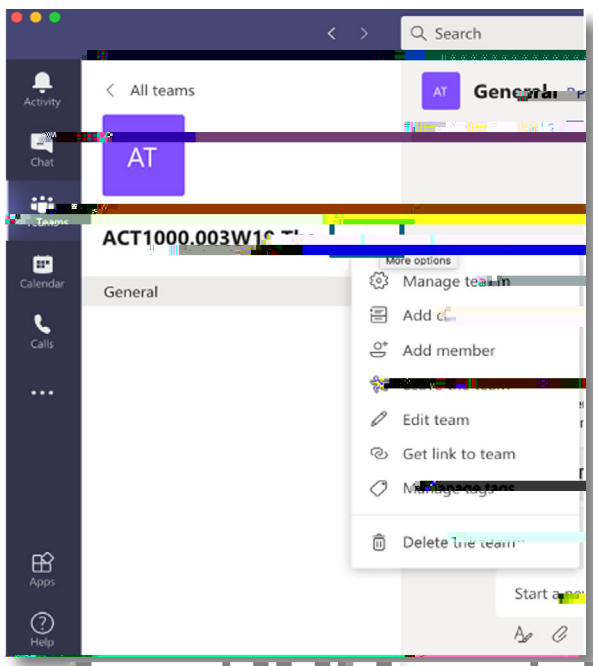
y # u 8



For a yo7@ //

01

ellipsis # u v



02

u # u Standard

Automatically show



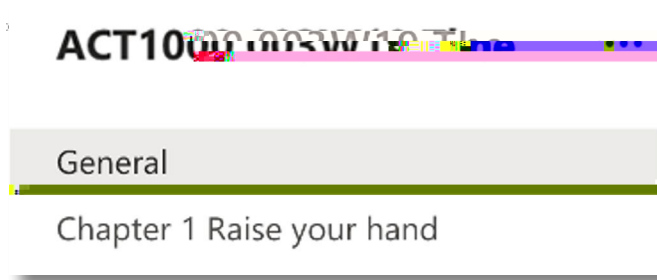
For a yo7@ //

)) 0 y07@ _ +

01

8

Standard



Quick TIP

Keep in mind that you cannot rearrange your channels, so plan ahead!

02

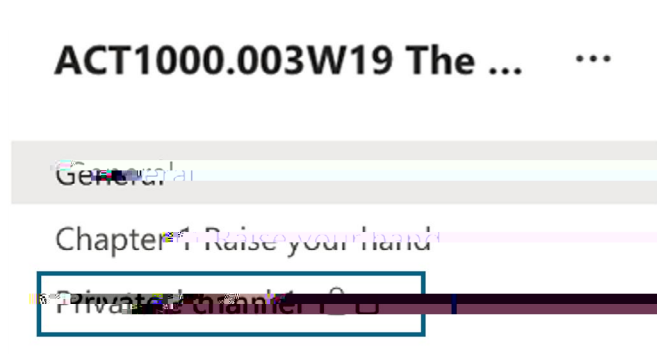
u

Private



03

h



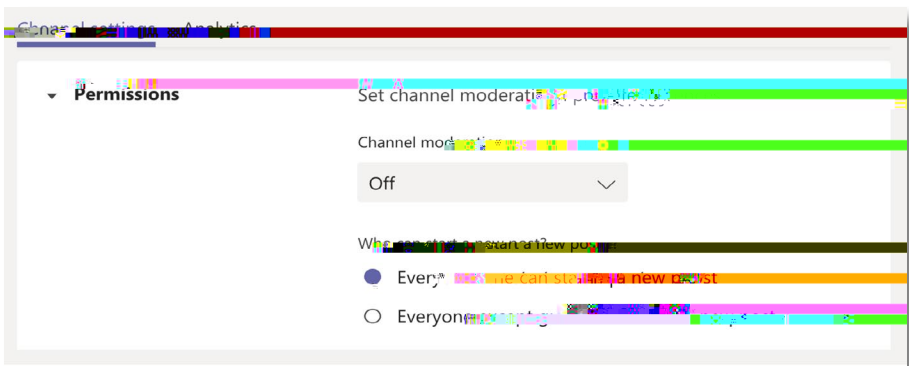
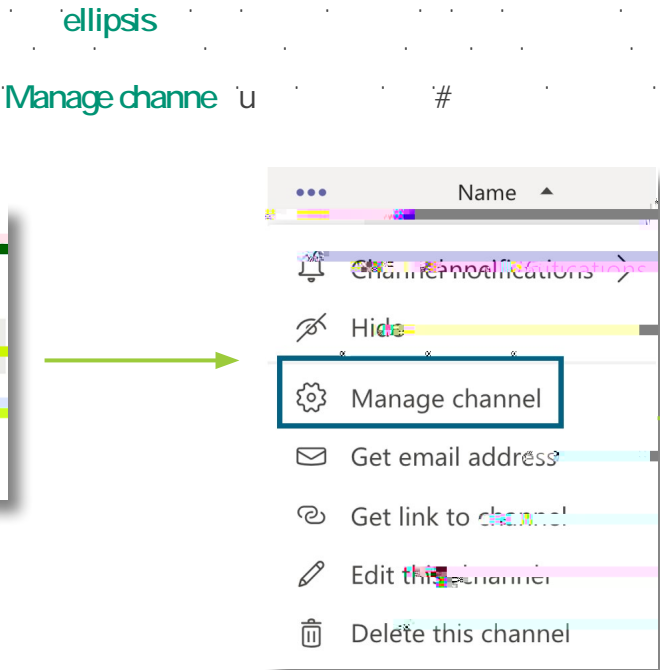
For a

)) 0 yo7@

//

)) 0 yo7@ - +

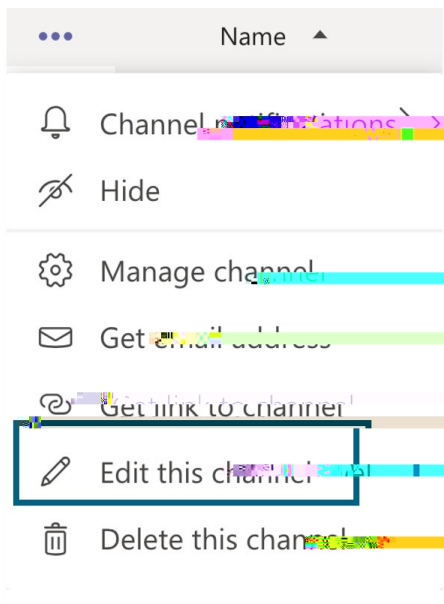
03



04

@

Edit this channel



You have a limited number of channels and if you delete one, the name is still taken. It's suggested that you rename it to something you'll never use before deleting it.

#

Plussign +

Add to list

Turn on for all apps; support private channels. More apps

Recent

OneNote Wiki Asana Document Library Excel PDF Power BI

PowerPoint Pages

YouTube

Manage apps

For a

)) 0 yo7@

//