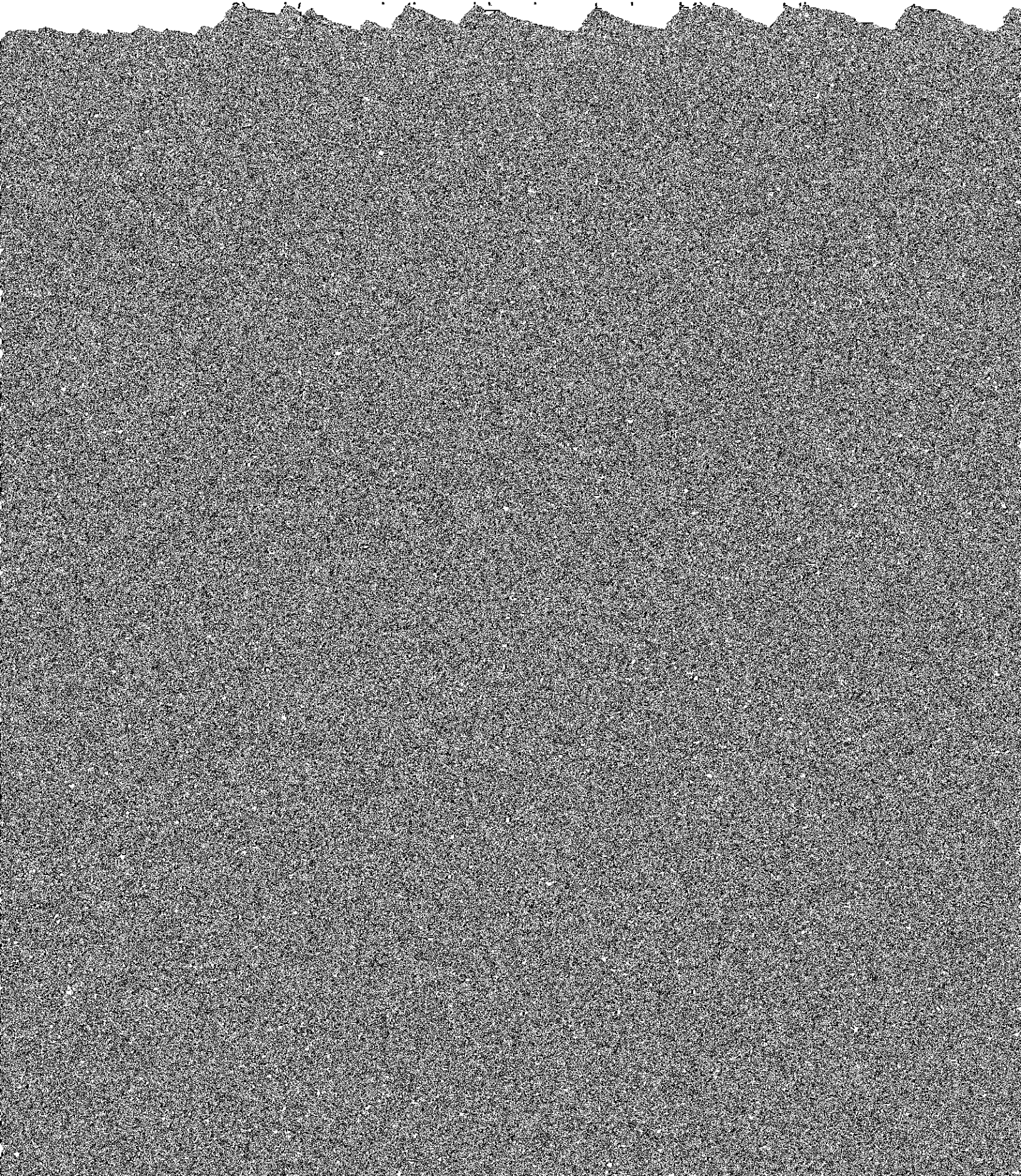


COLLIER FIRST

Year	Collier County	ADP	Average Cost Per	Average Cost Per
------	----------------	-----	------------------	------------------

COLLIER FIRST



Tab 5: 3.8.5 Project Design and Implementation

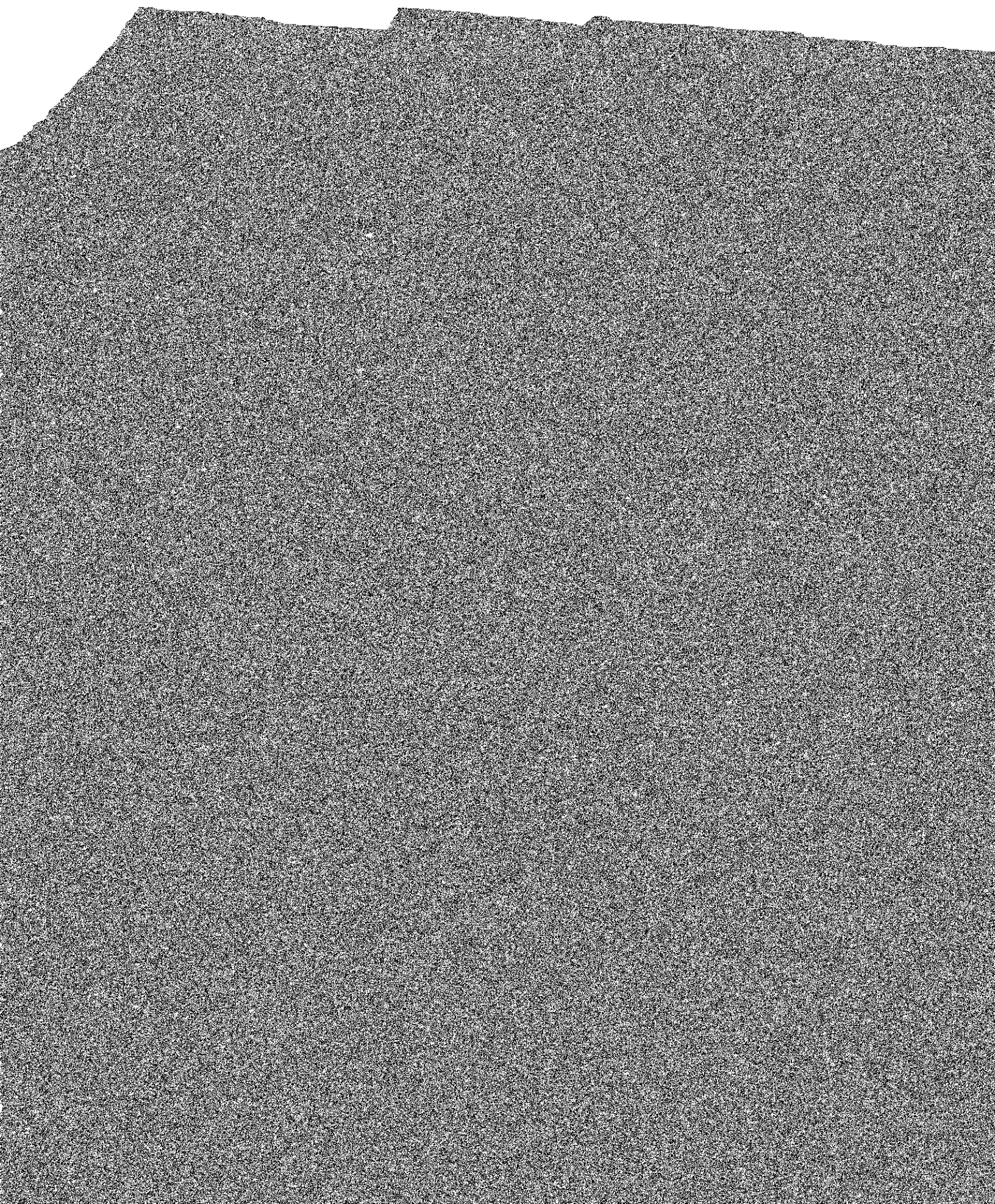
Intercept 2: Initial Detention / Initial Court Appearance

As part of the CJMHSA 2014-2017 grant, CCSO now screens all inmates for potential mental health and substance abuse problems, and are screened by CCSO's Pretrial

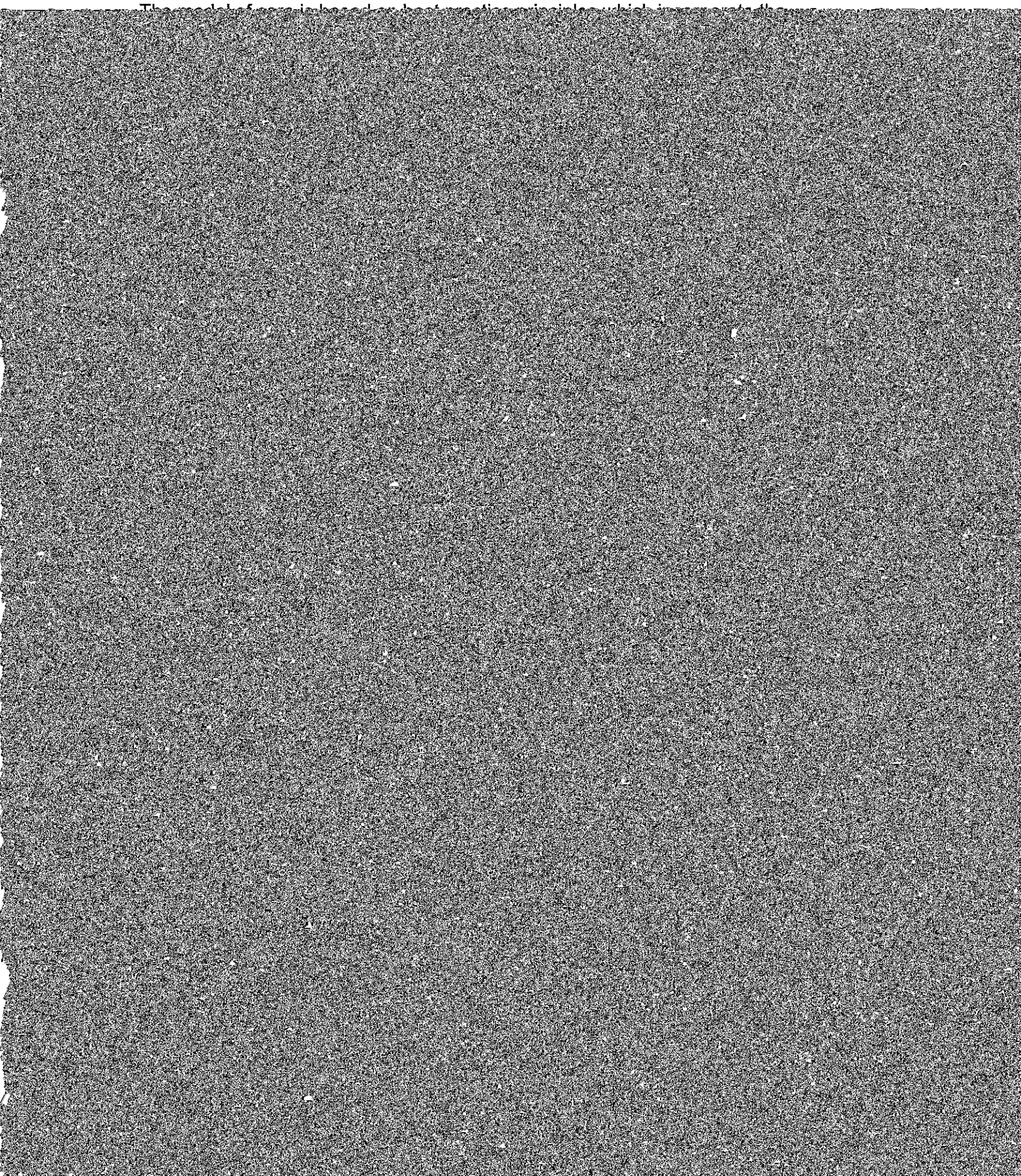
funds that may be used for rent, medications, transportation and other essentials for successful community living. The FACT team is usually at capacity and not able to take more than a few new admissions each year.

Cognitive Behavioral Interventions Targeted to Risk Factors

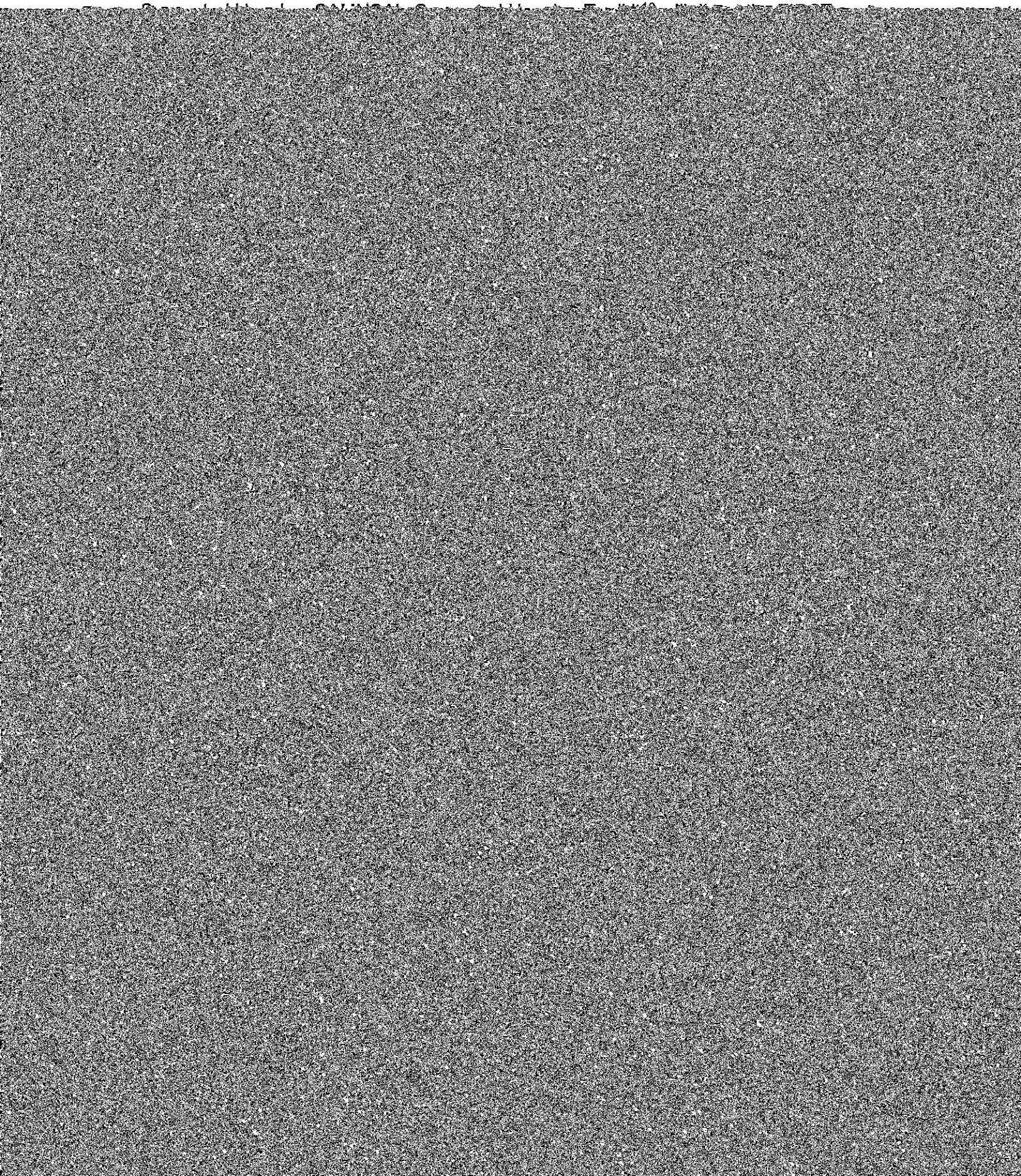




COLLIER FIRST



COLLIER FIRST



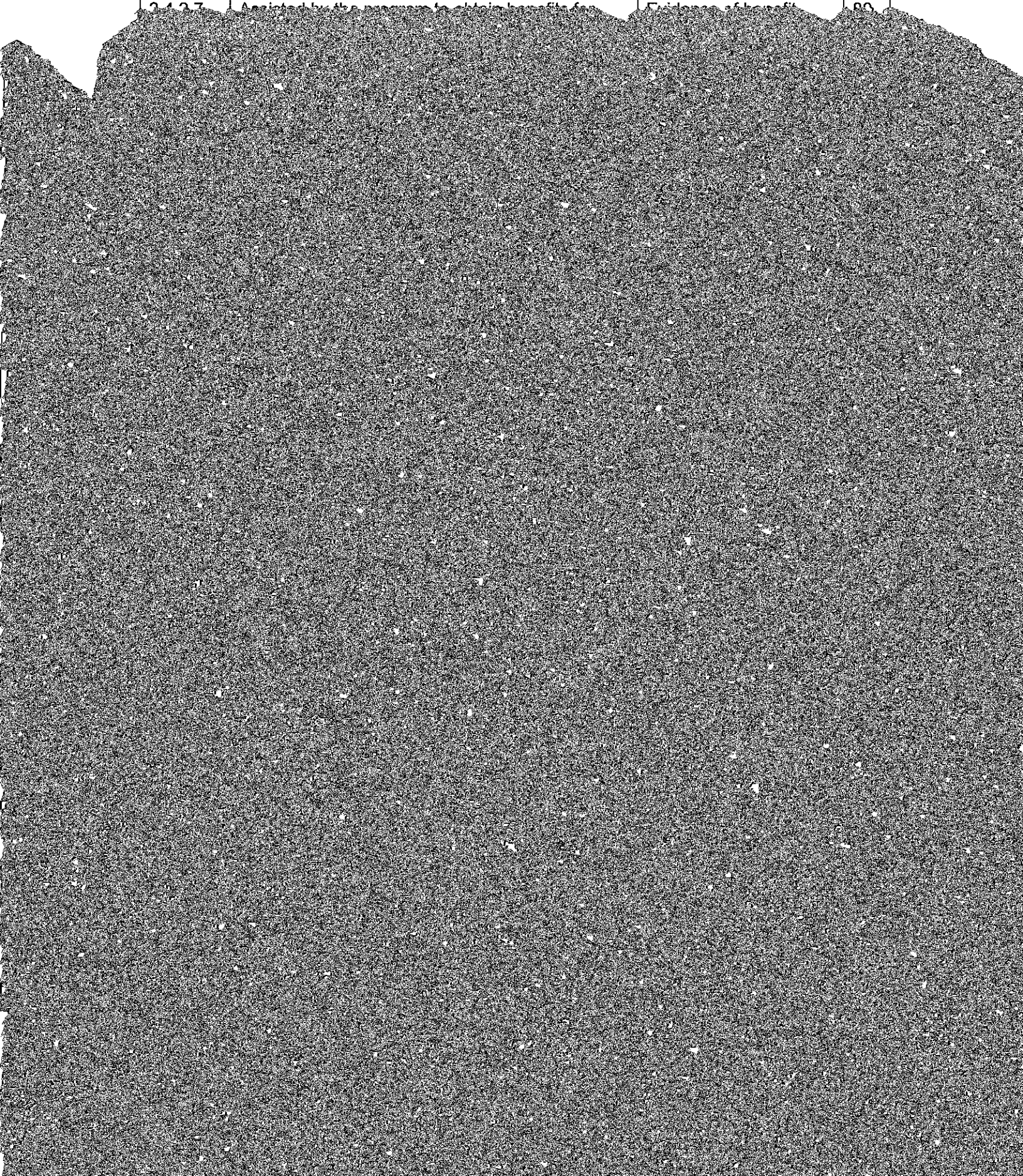
COLLIER FIRST

- Number served / encountered in case management, supported employment, CIT, DLC assessment center, peer supports, SOAR.

Responsible staff. The DLC Program Assistant/Case manager will collect the raw

COLLIER FIRST

2427 | Associated with the movement to the left | 2427 | 20



COLLIER FIRST